



created by

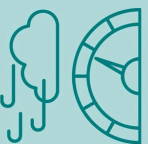


Get involved at [wvcag.org](http://wvcag.org)

**THANKS FOR BEING A COMMUNITY SCIENTIST!**

[fire.airnow.gov](http://fire.airnow.gov)

[airnow.gov](http://airnow.gov)



more places to check your **AIR QUALITY**

[map.purpleair.com](http://map.purpleair.com)



air quality map

check your **AIR QUALITY**



The AQI is a national index for reporting and forecasting daily air quality. It focuses on health effects that may be experienced within a few hours or days after breathing polluted air.

Daily AQI Value of Index Level of Concern

Green 0-50 Good

Yellow 51-100 Moderate

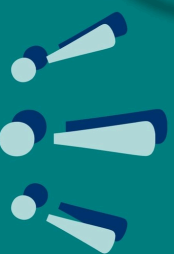
Orange 101-150 Unhealthy for Sensitive Groups

Red 151-200 Unhealthy

Purple 201-250 Very Unhealthy

Burgundy >300 Hazardous

**PURPLEAIR PA-II-FLEX**  
an air quality monitoring device that provides real-time measurements



**The PurpleAir FLEX sensor tests for...**

**Particulate Matter 1.0, 2.5, & 10:** a mixture of solid and liquid particles suspended in the air, like dust, bacteria, and pollen

**Volatile Organic Compounds:** a group of chemicals that can be harmful to human health and the environment

**It also tests for temperature and relative humidity.**